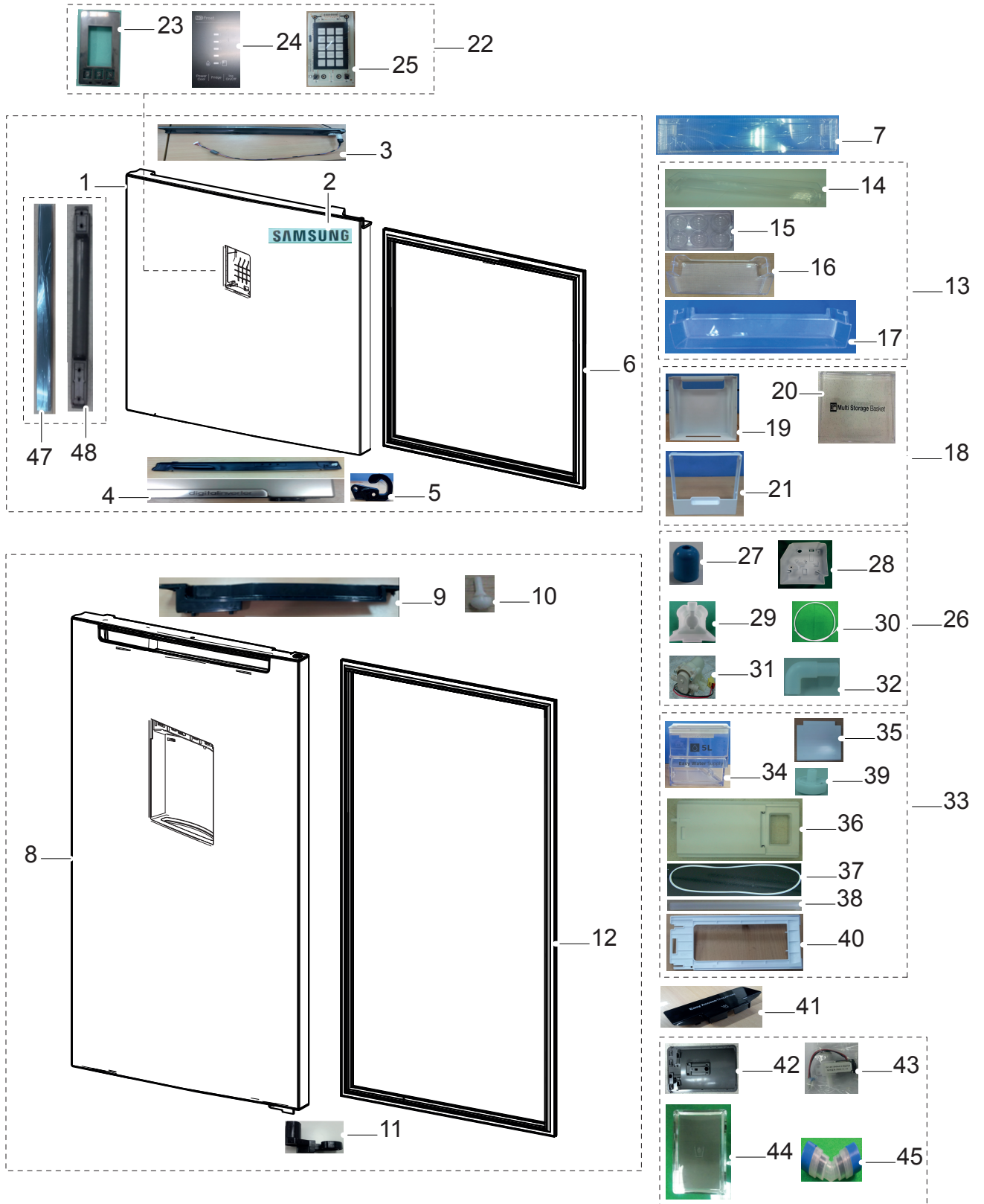


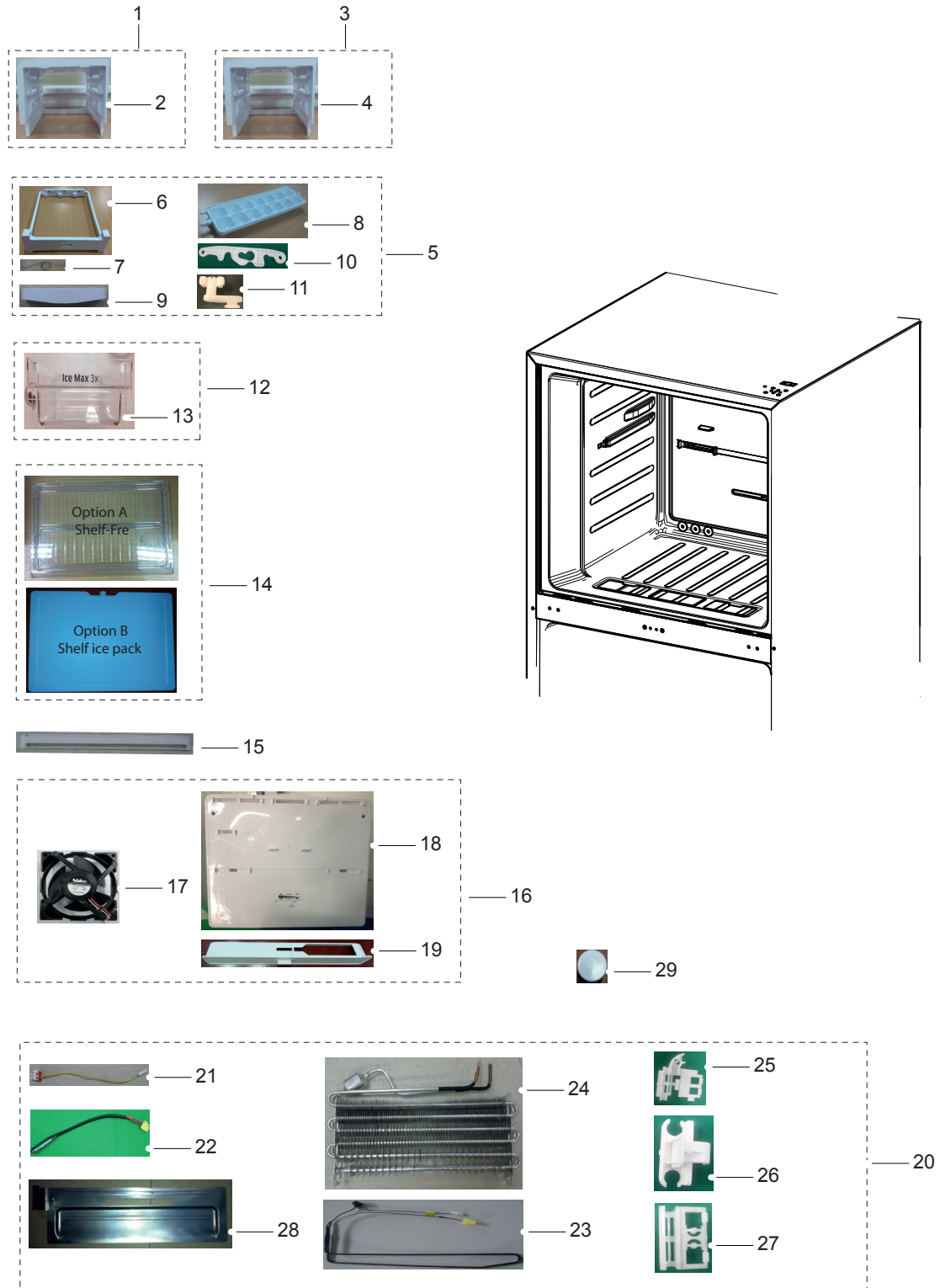
Door compartment



PART LIST OF DOOR : RT38FEJADSA/EF

No.	Code No.	Lvl.	Loc.	Description	Specification	Qty	SA/SNA
1	DA91-03967J	2	A0051	ASSY DOOR FOAM FRE	380,SA,BAR,DISPLAY	1	SA
2	DA64-04020A	3	M0196	MASCOT	ALL,NI,-,TO.06,L80	1	SA
3	DA97-13600A	3	-	ASSY CAP DOOR FRE-UP	3050 PJT,INOX GARY,	1	SNA
4	DA97-13605A	3	A0044	ASSY CAP DOOR FRE-LOW	3050 PJT,INOX GRAY	1	SNA
5	DA66-01008B	4	-	LEVER-AUTO CLOSE FRE	3050PJ,POM,I-BLACK	1	SA
6	DA97-13594K	2	A0557	ASSY-GASKET DOOR FRE	RT35/38,3050,GASKET	1	SA
7	DA63-07389A	2	A0711	GUARD-FRE	3050,GPPS,-,TP BLUE,380	2	SA
8	DA91-03962Z	2	A0052	ASSY DOOR FOAM REF	3050 DOOR REF,380,MG,	1	SA
9	DA97-13603A	3	-	ASSY CAP DOOR REF-UPP	3050 PJT,INOX GRAY	1	SNA
11	DA66-01009A	4	-	LEVER-AUTO CLOSE REF	3050PJ,POM,NATURAL	1	SA
12	DA97-13594L	2	A0535	ASSY-GASKET DOOR REF	RT38,3050,GASKET-SE	1	SA
13	DA90-07948D	1	A0166	ASSY GUARD	380,350 (TSE),6th- B,E,F,8th-	1	SNA
14	DA63-07417A	2	A0712	GUARD-EGG	3050,GPPS,T3.0,TP BLUE,380	1	SA
15	DA63-07346A	2	A0656	TRAY EGG	3050,GPPS,-,HB,TP BLUE,165N,HI-	2	SA
16	DA63-07391A	2	-	GUARD-VARIETY L	3050,GPPS,T3.0,TP BLUE,3	1	SA
17	DA63-07392A	2	-	GUARD-VARIETY R	3050,GPPS,T3.0,TP BLUE,3	1	SA
17	DA63-07387A	2	Z1010	GUARD-BOTTLE	3050,GPPS,T3.0,TP BLUE,380	1	SA
22	DA97-13300K	2	A0626	ASSY COVER CONTROL	3050PJT,TMF, I-BLACK	1	SA
23	DA63-07296C	3	A1196	COVER-CONTROL	3050PJT,ABS,HB,I BLACK,HG-	1	SA
24	DA64-04377B	3	-	INLAY CONTROL	3050PJT TMF,PC,TO.38,BLACK	1	SA
25	DA92-00464A	3	-	ASSY-PCB KIT LED	3050-PJT,TMF,OUTER	1	SC
26	DA97-13463A	2	-	ASSY CASE-PUMP VALVE 1WAY	3050	1	SA
27	DA61-07477A	3	-	CAP-TUBE	AW2,ABS,BLUE(SC-99430R)	1	SNA
28	DA61-08949A	3	-	SUPPORT-PUMP VALVE	3050,HIPS,HB,S834S1,C	1	SNA
29	DA61-08950A	3	-	CASE-PUMP MOLD	3050,PP,NATURAL,HB,BJ750	1	SNA
30	DA62-02429T	3	-	PIPE-WATER LINE	A-TOP08,LLDPE,WHT,O.D 7.	1.32	SNA
31	DA66-00123B	3	A1265	MOTOR DC PUMP	NTGM104TA1,12V,400mA,-30to	1	SNA
32	DA63-07363A	3	-	GROMMET-PUMP HOSE	3050,SI,NATURAL	1	SNA
33	DA97-13644A	2	-	ASSY CASE-WATER TANK	3050,TP BLUE	1	SA
34	DA61-08931A	3	-	CASE-WATER TANK	3050,GPPS,TP BLUE,656D,N	1	SA
35	DA63-07356A	3	-	COVER-WATER SUPPLY	3050,HIPS,COOL WHITE,	1	SA
36	DA63-07358A	3	M0029	COVER-WATER TANK	3050,HIPS,COOL WHITE,S8	1	SA
37	DA63-07357A	3	-	GASKET-WATER TANK	3050,SI,NATURAL	1	SA
38	DA63-07364A	3	-	GROMMET-WATER HOSE	3050,SI,NATURAL	1	SA
39	DA97-13645A	3	-	ASSY CASE-MESH FILTER	3050	1	SA
40	DA61-08952A	2	-	SUPPORT-WATER TANK	3050,HIPS,S834S1,COOL	1	SA
41	DA97-13629A	2	G0282	ASSY COVER DISP	3050PJT,I-BLACK	1	SA
42	DA97-13669A	4	-	ASSY CASE-DISPENSER	3050PJT,INOX Pearl(G	1	SNA
43	DA62-04242A	5	-	VALVE DC	DC12V,50,1WAY,L-Wire,1,1,NO	1	SA
44	DA66-01007A	2	M0038	LEVER DISPENSER	3050,ABS+PC,SC-1220R/HG-	1	SA
45	DA60-00331A	2	-	FITTING TUBE	FITTING-TUBE ASSY,PP,5/16,5	1	SA
47	DA63-07539A	2	-	COVER HANDLE	3050,PMMA,NATURAL,M.CODE-1(1	SA
48	DA64-04402A	2	-	HANDLE BASE	3050-PJT,ABS,HG-0760GP,COMO	1	SA

Freezing compartment



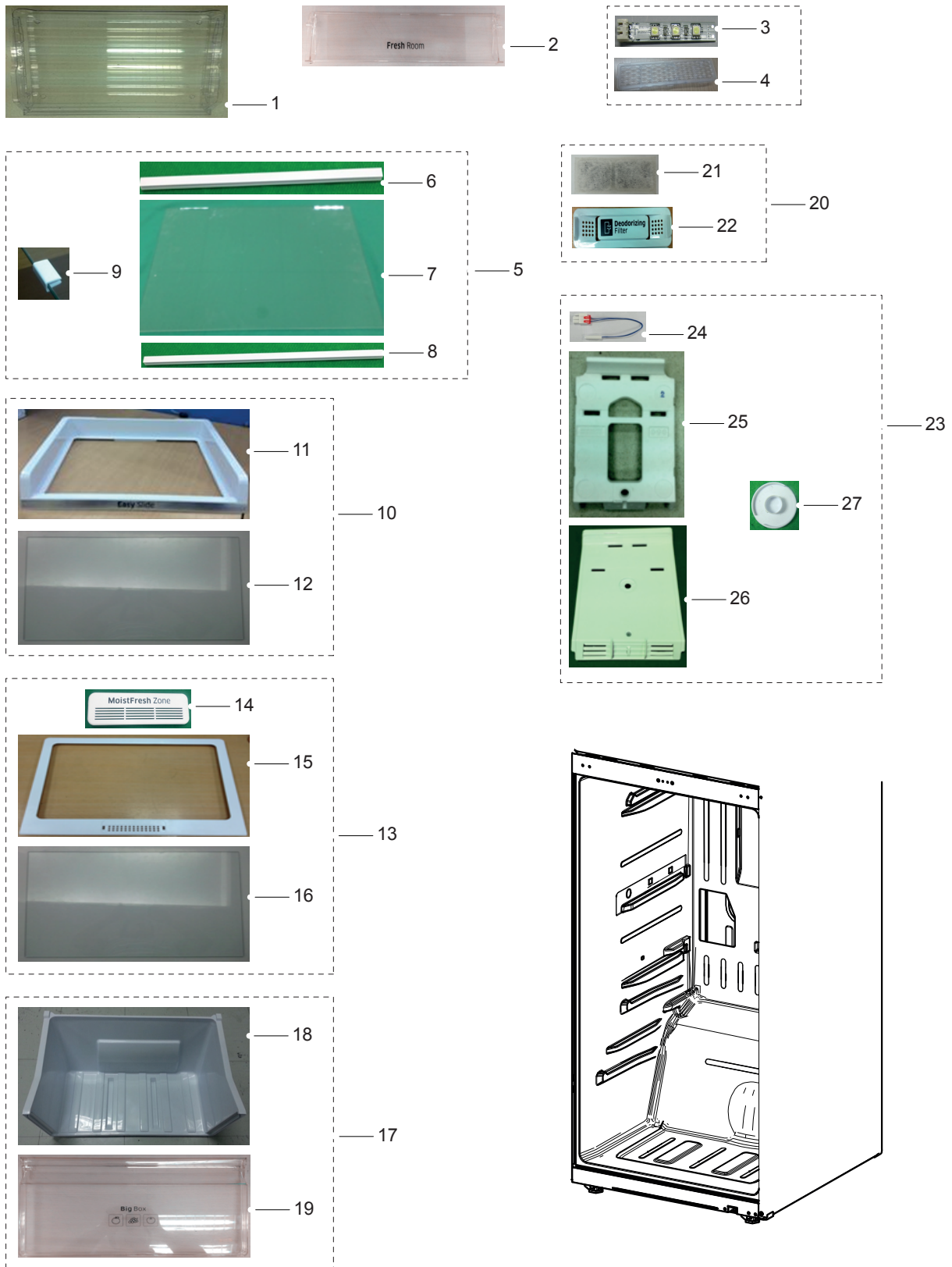
PART LIST OF FREEZER : RT38FEJADSA/EF

No.	Code No.	Lvl.	Loc.	Description	Specification	Qty	SA/SNA
1	DA90-07941A	2	-	ASSY ICE MAKER-L	RT38/35,MANUAL 3 TWIST,	1	SA
2	DA61-08910A	3	-	SUPPORT-TRAY ICE L	RT380,HIPS,S834S1,COO	1	SA
5	DA97-13500A	3	A0107	ASSY TRAY-ICE	RT38/35/32/29,COOL,3 TWIST	1	SC
6	DA61-08906A	4	A0718	CASE-TRAY ICE	RT38/35/32/29,3-TWIST,PP,C	1	SA
7	DA61-20136A	4	-	SPRING ETC-ICE MAKER	SR-53EA,STS304,COIL	2	SA
8	DA63-07337A	4	A0120	TRAY ICE	3050,TMF,PP,T1.0,-,COOL WHITE,1	3	SA
9	DA64-04461A	4	A0118	KNOB-TRAY ICE	3050 TMF,ABS,2.0,COOL WHTI	1	SA
10	DA66-01002A	4	M0434	LEVER-TRAY ICE	RT320,POM,NTR,3TWIST	1	SA
11	DA66-01003A	4	-	LEVER-TRAY ICE KNOB	3050,TMF,PA66,NTR	1	SA
12	DA97-13670A	3	-	ASSY TRAY-ICE CUBE	3050,3-TWIST,TP BLUE	1	SA
13	DA63-07333A	4	-	TRAY ICE-CUBE	RT38/35/32/29,3-TWIST,GPPS	1	SA
14	DA67-03604A	2	-	SHELF FRE-HALF	RT38/35,GPPS,TP BLUE	1	SA
15	DA63-07355A	2	A0756	COVER-AIR FRE	RT380/350,PP,COOL WHITE	1	SA
16	DA97-13527A	2	M0416	ASSY COVER-EVAP FRE	3050PJT,35/38	1	SA
17	DA31-00287A	3	-	MOTOR BLDC FAN	3350±7%,12V,0.16A,1.92W,-	1	SC
18	DA63-07369A	3	-	COVER EVAP-FRE	3050,PP,1.5,-,COOL WHITE,	1	SNA
19	DA64-04417A	3	A0508	KNOB-TEMP CONTROL	3050,PP,1.5,COOL WHITE	1	SA
20	DA96-01010A	2	A0163	ASSY EVAP-FRE	3050-TMF,FIN TUBE	1	SA
21	DA32-10105F	2	A1018	SENSOR TEMP	502AT,PX-41C,DKST1329GW,ACE,	1	SA
22	DA47-00301F	3	A1008	THERMO FUSE-ASSY	AC250V,10A,109~110℃,S.O	1	SA
23	DA47-00460F	3	A0921	HEATER METAL SHEATH	AC230V,3050 TMF, 330	1	SA
24	DA59-00554A	3	A0742	EVAP FRE	FIN TUBE,AL,3050-PJT	1	SNA
25	DA61-00603A	3	T0066	FIXER-SENSOR	n-PJT,PP,-,-,-	1	SA
26	DA61-07410A	3	G0205	FIXER-HEATER FRE	NW2,PP,WHITE,V0	1	SA
27	DA61-07411A	3	A0744	FIXER-FUSE	NW2,PP,NATURAL,BJ730	1	SA
28	DA61-09104B	3	-	PLATE EVAP-REAR	3050,GI-SGCC,-,T0.3	1	SA
29	DA67-30266K	2	A0270	CAP-SCREW	A-TOP,PP,SC-02740R,-,-,Cool-wh	3	SA

SAMSUNG ELECTRONICS

11569467

Fridge compartment



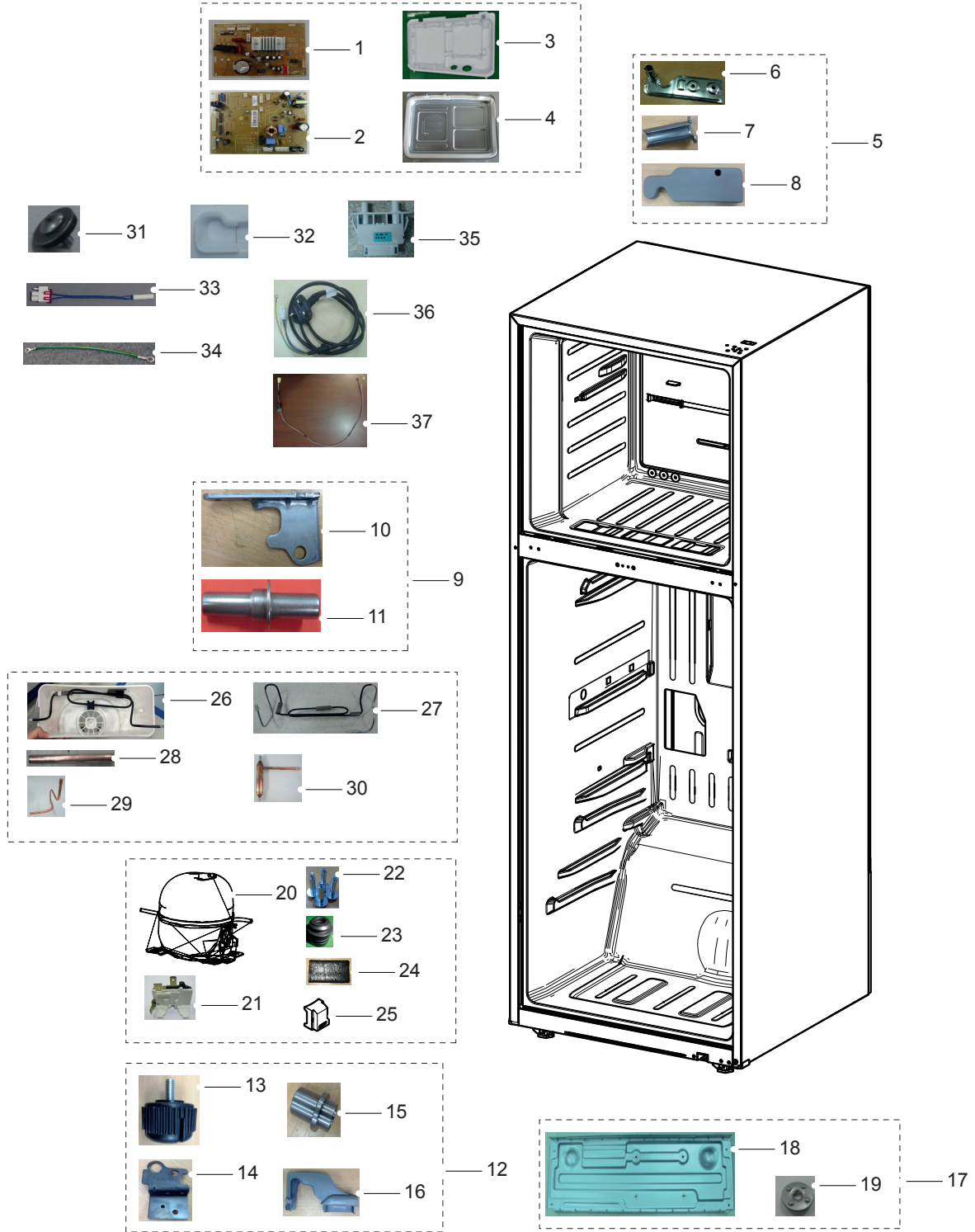
PART LIST OF FRIDGE : RT38FEJADSA/EF

No.	Code No.	Lvl.	Loc.	Description	Specification	Qty	SA/SNA
1	DA63-07376A	2	M0061	TRAY-CHILLED ROOM	3050(RT380),GPPS,-,HB,	1	SA
2	DA63-07374A	2	-	COVER-CHILLED ROOM	3050(RT380),GPPS,HB,T	1	SA
3	DA41-00519R	2	G0090	ASSY LAMP LED	3ea,CEM-1,65*10,WHITE,SMAW	1	SA
4	DA63-07368A	2	A0490	COVER-LAMP	3050,GPPS,T2.0,TRANSFANRENCY	1	SA
5	DA97-13502B	2	-	ASSY SHELF GLASS-REF	RT38/35,COOL WHITE	1	SA
6	DA64-04392B	3	-	TRIM SHELF-FRONT REF	RT38/35,HIPS,S834S1	1	SA
7	DA67-03645B	3	-	GLASS-SHELF REF	RT380/350,TEMPERED GLASS	1	SNA
8	DA64-04395B	3	-	TRIM SHELF-REAR REF	RT38/35,HIPS,S834S1,	1	SA
9	DA64-04718A	3	-	TRIM SHELF-SIDE	3050,HIPS,White,-	2	SNA
10	DA97-13489A	2	-	ASSY SHELF-SLIDE OUT	3050(RT380)	1	SA
11	DA67-03631A	3	-	SHELF-SLIDE OUT	3050(RT380),HIPS,T2.5,CO	1	SNA
12	DA67-03645E	3	-	GLASS-SHELF SLIDE	RT380/350,TEMPERED GLA	1	SNA
13	DA97-13490A	2	M0004	ASSY COVER-VEG	3050(RT380)	1	SA
14	DA63-07341A	2	-	COVER-SHEET	3050,HIPS,T2.0,HB,COOL WHITE	1	SA
15	DA63-07371A	3	A0210	COVER VEG	3050-RT380,HIPS,T2.5,HB,COOL W	1	SNA
16	DA67-03645H	3	-	GLASS-COVER VEG	GLASS,T4.0,RT380/350,TEM	1	SNA
17	DA97-13483A	2	M0236	ASSY CASE-VEG LOW	3050(RT380),T2.5,COOL	1	SA
18	DA61-08975A	3	M0268	CASE-VEG LOW	3050(RT380),PP,T2.5,COOL WH	1	SNA
19	DA63-07378A	3	-	COVER-VEG LOW FRONT	3050(RT380),GPPS,HB,	1	SNA
20	DA97-13606A	2	-	ASSY COVER-DEODORIZER	3050PJT	1	SA
21	DA02-00216B	3	-	CATALYST-DEODORIZER	T10,W15,L30,activate	1	SA
22	DA63-07423A	3	-	COVER-DEODORIZER	3050,PP,-,COOL WHITE,BJ	1	SNA
23	DA97-13528B	2	M0059	ASSY COVER-MULTI REF	3050PJT,DISPLAY	1	SA
24	DA32-10105F	2	A1018	SENSOR TEMP	502AT,PX-41C,DKST1329GW,ACE,	1	SA
25	DA62-04047A	3	A0695	INSULATION-MULTI REF	3050,PS FOAM,WHITE,	1	SNA
26	DA63-07366B	3	A0689	COVER-MULTI REF	3050,PP,1.5,-,COOL WHITE	1	SNA
27	DA67-00738A	3	M0356	CAP-KNOB	MAX-PJT,PP,WHITE (SC-93437R),WE	1	SNA

SAMSUNG ELECTRONICS

11569467

Cabinet compartment



PART LIST OF CABINET : RT38FEJADSA/EF

No.	Code No.	Lvl.	Loc.	Description	Specification	Qty	SA/SNA
1	DA92-00460E	1	A0952	ASSY PCB MAIN	BETTER/BEST,3050-PJT,148*1	1	SA
2	DA92-00459A	1	M0309	ASSY PCB INVERTER	INVERTER,3050,148*98.5	1	SA
3	DA61-08917A	3	-	CASE-PCB PANEL	320,PP,BLACK,-,COPO,3050	1	SNA
4	DA97-13545C	2	-	ASSY COVER PCB-PANEL	320, 350, 380,3050	1	SA
5	DA97-13610A	2	A0705	ASSY HINGE UPP	3050PJ,T2.0,380/350	1	SA
6	DA61-08986A	3	A0240	HINGE-UPP	3050PJ,PO-SPHC,T2.0,350/380	1	SNA
7	DA66-00349A	3	A0518	SHAFT-HINGE	USP-PJT,SPC	1	SNA
8	DA63-07382A	2	M0360	COVER-HINGE UPP	3050PJ,PP,HB,BJ750,INOX	1	SA
9	DA97-13611A	2	A0513	ASSY HINGE MID	3050PJ,T3.2,380/350	1	SA
10	DA61-08984A	3	A0831	HINGE-MID	3050PJ,PO-SPHC,T3.2,350/380	1	SNA
11	DA66-01005A	3	-	SHAFT-HINGE MID	3050PJ,SWCH10A	1	SNA
12	DA97-14264B	2	M0344	ASSY HINGE-LOW	3050PJ,RT35/38	1	SA
13	DA61-00805E	3	A0577	FOOT-FRONT	ARAM-PJT,PP,BLACK	1	SA
14	DA61-08982A	3	A0247	HINGE-LOW	3050PJ,PO-SPHC,T4.0,350/380	1	SNA
15	DA66-01004A	3	-	SHAFT-HINGE LOW	3050PJ,SWCH10A	1	SNA
16	DA63-07381A	2	-	COVER-HINGE LOW	350/380,PP,T1.5,HB,INOX	1	SA
17	DA97-13451A	2	A0526	ASSY CHASSIS COMP	3050-PJT,T0.8,RT38	1	SA
18	DA64-04408A	3	A0739	CHASSIS COMP	RT380,GI-SGCC,T0.8,-,TMF-67	1	SNA
19	DA71-50240B	3	A0612	BRACKET-CABI	TSE MODEL,GI-SGCC,T1.6	4	SNA
20	MSV488AL1R/TT1	2	-	COMPRESSOR	BLDC IPM,8.82CC,115/220V,STAI	1	-
21	DA34-00004B	3	A0575	RELAY PROTECTOR O/L	4TM308RFBYY-82	1	SC
22	DA60-20008A	3	A0564	BOLT-HEX	SWRCH10A,M6,L42.6(28.1),-,ZPC(S	4	SC
23	DA63-02617A	3	Z1112	GROMMET COMP	USP05,EPDM,OD27.0,BLACK	4	SA
24	DA62-00960A	2	-	SEAL CUTT-RUBBER	RUBBER,BLACK,T3,W40,L70	1	SA
25	DA63-06122A	3	Z1032	COVER RELAY	MSV,MPPO,T2.0,5V-A,BLACK,M-H	1	SA
26	DA97-12658D	2	A0529	ASSY TRAY DRAIN WATER	3050_TMF,ADD PIPE	1	SA
27	DA97-13647B	3	-	ASSY PIPE IMMERSING	3050_TMF,Add seal,RT	1	SA
28	DA73-00199B	2	Z1004	PIPE-PIPE CONNECT	-,C1220T,-,OD6.35,L95,	1	SA
29	DA62-04154A	2	M0016	PIPE CONNECT-SUCTION	3050-PJT,CU,-,C1220	1	SA
30	DA62-04309C	2	A0669	DRYER	C1220,114,SINGLE MOUTH,Outlet ID2.	1	SA
31	DA60-00018A	2	-	SCREW MACHINE	TH,+ ,PASS,STS304	1	SA
32	DA67-03764A	3	-	CAP NUT-RH	3050,HIPS,T1.5,HB,2710,NATURA	1	SA
33	DA32-10105F	2	A1018	SENSOR TEMP	502AT,PX-41C,DKST1329GW,ACE,	1	SA
34	DA39-00429D	2	A0562	ASSY WIRE HARNESS-EARTH	ALL,FREE VOLT,UL	1	SA
35	DA34-10121C	2	M0379	SWITCH DOOR	AC125V/250V,1.5/0.75,1BUTTON	1	SA
36	3903-000793	2	A0273	CBF-POWER CORD	AT,E.U,EU3F,3C,250V,16A,B	1	SA

11569467